

	VT300W	VT310W	VT320W	VT330W
<b>Display</b>				
Type	Graphic monochrome STN LCD		Graphic LCD 16 colors STN	Graphic LCD 16 tones of gray/256 colors TFT
Backlighting	LED	CCFL		
Min. lamp life at 77°F (h)	-	10,000	15,000	30,000
Resolution in pixels h-v (inches)	240x64	240x128 (5.5")	320x240 (5.7")	640x480 (10.4")
Columns by Rows [text]	40x8/20x4/10x2	40x16/20x8/10x4		80x30/40x15/20x7
Display area size (inches h-v)	5.20x1.54	4.85x2.68	4.55x3.43	7.72x5.83(m)/8.32x6.23(c)
Text character Matrix (pixels h-v)	6x8/12x16/24x32		8x15/16x30/32x60	8x16/16x32/32x64
Character dimensions (inches h-v)	0.13x0.17	0.12x0.16	0.11x0.20	0.11x0.20
Contrast adjustment	Software			
Character set	Programmable fonts/TTF Windows®			
<b>User memory</b>				
Project (text+graphic) (bytes)	192K+384K		192K+832K	640K+1792K
Recipes/Alarm buffer (bytes) <sup>1</sup>	128K/8K RAM		256K/8K RAM	
Memory card for backup/Expansion (bytes)	4M/-			8M/4M (graphic)
<b>Interfaces</b>				
MSP serial port	RS232/422/485/TTY 20 mA			
ASP serial port	RS232/RS485 (15 pin)			
LPT parallel port	Centronics			
Connection with optional keyboard	Yes			-
<b>Networks</b>				
Integrated (option)	CAN	-		
Optional <sup>2</sup>	Profibus-DP, Interbus-S, CAN			
ESA-Net	Server (256 variables), Client			
<b>Dimensions</b>				
External (W x H x D) (inches)	9.93x7.72x2.36		12.02x7.72x2.36	17.14x10.24x2.92
Cut-out (W x H) (inches)	9.14x7.01		10.84x6.93	15.88x9.46
<b>Technical data</b>				
Power supply/Power consumed (24 Vdc)	18...32 Vdc/11 W		18...32 Vdc/15 W	18...32 Vdc/15 W
Protection level	IP 65 (front)			
Operating temperature (°F)	+32...+122			
Storage/transport temperature (°F)	-4...+140			
Humidity (non-condensing)	<85%			
Weight (lbs)	3.3		4.4	8
Certificates of approval	CE, cULus			
<b>Main features</b>				
Project Languages	8			
Password levels/Bit passwords	10/8			
Pages/Fields per page	1024/80	1024/96	1024/112	1024/304
Format of variables	DEC, HEX, BIN, BCD, ASCII, Floating point			
Dynamic texts/Lists of images	Value depends on dimensions of project memory			
ISA alarms/Info-messages	1024/1024			
Help messages (pages/info messages/alarms)	1024/1024/1024			
Alarm history buffer	256			
Recipes (Number/Variables per recipe)	1024/256		2048/512	1024/512
Trends (Memory/Number of samples)	512/240		4096/320	8192/640
Pipelines (Number/Total bytes)	64/512			
Macros (Number/Commands per macro)	1024/16			
Print pages (Total/Number of fields per page)	1024/128			
Automatic operations <sup>3</sup>	32			
Timers (Time base 100 ms) <sup>3</sup>	32			
Equations <sup>3</sup>	32			
Max bargraphs per page (taken together with fields)	80	96	112	304
Indicators,potentiometers,selectors per page <sup>3</sup>	-	-	-	256
Project images	BMP, JPEG, TIFF, PSD, WMF, PNG, EPS, ETC...			
Hardware clock	With battery			
<b>Keyboard</b>				
Operative/function/alphanumeric keys	14/24/11	14/21/11	13/28/11	19/28/27

① - With battery    ② - Obtainable using VTPROFI/DP, VTINTERBUS and VTCAN    ③ - Not present on VT330 in gray tones

# Graphic Terminals



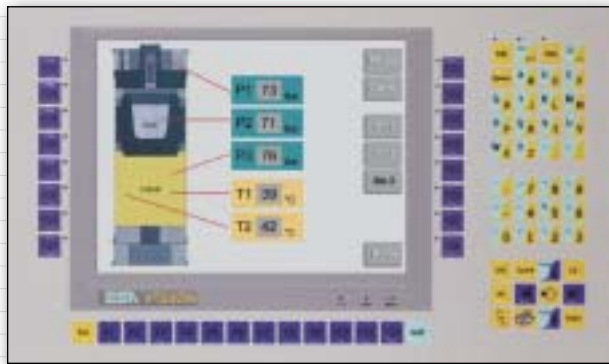
**VT300W**  
Monochrome STN LCD  
240 x 64 - 39 keys



**VT320W**  
16-Color STN LCD  
320 x 240 (5.7") - 52 keys



**VT310W**  
Monochrome STN LCD  
240 x 128 (5.5") - 46 keys



**VT330W**  
16 Tones of gray STN/256-Color TFT LCD  
640 x 480 (10.4") - 72 keys

Machine supervision is made easier with ESA Graphic Terminals. On-screen graphics provide an intuitive user interface with realistic graphics and high-quality fonts.

Main characteristics:

- Alarms, passwords, recipes
- Use of Windows® fonts
- Importation of graphic images in any format
- Moving graphic objects
- Two drivers run simultaneously
- Serial or parallel printing
- Integrated CAN

### Graphic terminals codes and descriptions

VT300W A0000	Interfaces: MSP, ASP - Project: 512 KB - Recipes: 128 KB
VT300W AP000	Interfaces: MSP, ASP, LPT - Project: 512 KB - Recipes: 128 KB
VT300W 000CN	Interfaces: MSP, CAN network - Project: 512 KB - Recipes: 128 KB
VT310W A0000	Interfaces: MSP, ASP - Project: 512 KB - Recipes: 128 KB
VT310W AP000	Interfaces: MSP, ASP, LPT - Project: 512 KB - Recipes: 128 KB
VT320W A0000	Interfaces: MSP, ASP - Project: 1 MB - Recipes: 256 KB
VT320W AP000	Interfaces: MSP, ASP, LPT - Project: 1 MB - Recipes: 256 KB
VT330W APM00	Interfaces: MSP, ASP - Project: 2 MB - Recipes: 256 KB (Tones of gray)
VT330W APT00	Interfaces: MSP, ASP, LPT - Project: 2 MB - Recipes: 256 KB (Color)

### Accessories codes and descriptions

VTBUTTONCELL	Lithium 3V cell battery CR2032 for maintaining recipes and clock
FLASH MODULO 04	4MB flash module for backup/expansion (VT330W)
FLASH MODULO 08	8MB flash module for backup (VT330W)