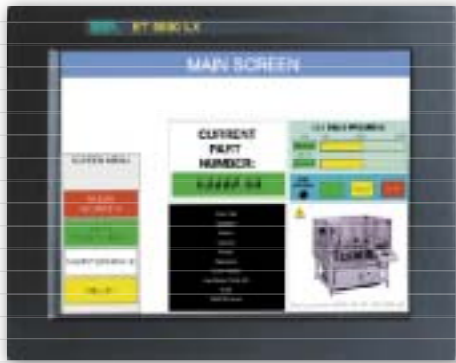


	ET 5200LX	ET 5400LX	ET 5800LX
Display			
Type	Graphic 65k colors TFT		
Touch Screen	Analog resistive		
Backlighting	CCFL		
Min. lamp life at 77°F (h)	20,000		
Resolution pixels h-v (inches)	640x480 (6.4")	800x600 (8.4")	1024x768 (14.1")
Contrast adjustment	None required		
Character set	True-Type fonts		
Processor			
CPU	Geode GX1 300Mhz		
System memory			
RAM Memory (bytes)	64M		
CMOS Battery-backed (bytes)	128K RAM		
Flash memory (bytes)	Compact flash (32M standard, 64M to 1G optional)		
Interfaces			
COM1	RS232		
COM2	RS232		
COM3	RS232		
COM4	RS422/485		
Programming port	RS232		
USB port	2		
Mouse PS/2 port	1		
Keyboard PS/2 port	1		
PC104 expansion	1 to 2 optional	1 to 3 optional	
Optional On-Board I/O points	24 optional		
Networks			
Integrated	Ethernet 10/100 Mbit - RJ45		
Optional PC104	Ethernet, CAN, others		
Dimensions			
External (W x H x D) (inches)	8.5x6.5x3.6	10.3x7.6x3.6	14.5x11.5x3.6
Cut-out (W x H) (inches)	7.9x5.7	9.9x6.8	13.6x10.6
Technical data			
Power supply/Power consumed (24 Vdc)	18-32 Vdc/15W	18-32 Vdc/18W	18-32 Vdc/22W
Protection level	NEMA 4/IP65 (NEMA 4X Optional)		
Operating temperature (°F)	+ 32... + 122		
Storage/Transport temperature (°F)	-4... + 140		
Humidity (non-condensing)	< 85%		
Weight (lbs)	5.1	6.1	10.5
Certificates of approval	none currently - CE and cUL pending		
Main features			
Graphic objects supported	Data displays, Bargraphs, Buttons, Super buttons, Indicators Images, Text, Drawing objects (line, circle, rectangle) Trend-charts, Gauges, Subscreens		
Graphic objects per page	Limited only by resident flash memory (CompactFlash)		
BASIC Scripting supported	All objects can have dynamic or run-once BASIC scripts (screens and graphic objects) Limited only by resident flash memory (CompactFlash)		
BASIC Multi-tasking scripting	Tasks can run simultaneously with screen tasks and screen updates		
BASIC Subroutines supported	Limited only by resident flash memory (CompactFlash)		
Password levels	Limited only by resident flash memory (CompactFlash)		
Pages/Variables per page	Limited only by resident flash memory (CompactFlash)		
Format of variables	Decimal, Hex, Octal, BCD, ASCII, Single and Double-Precision Floating Point		
Static and Dynamic text	Limited only by resident flash memory (CompactFlash)		
Alarms/Messages	Limited only by resident flash memory (CompactFlash)		
Help messages	Limited only by resident flash memory (CompactFlash)		
Alarm event list	Limited only by resident flash memory (CompactFlash)		
Recipes (Number/Variables per recipe)	65535/255		
Trends (Memory/Number of samples)	65535/640	65535/800	65535/1024
Hardware Time of Day/Calender	Standard		
Non-volatile registers	128KB of Non-Volatile memory - user configurable		
Project images	BMP, JPEG, PNG, GIF, ICO		

Linux Terminals



ET5800LX
65K-Color TFT LCD
1024 x 768 (14.1")

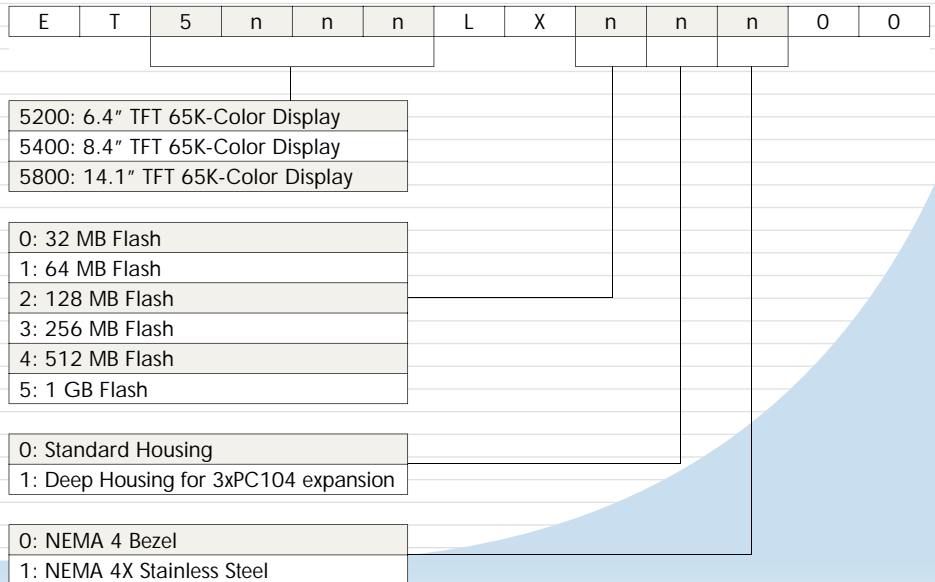


ET5200LX
65K-Color TFT LCD
640 x 480 (6.4")



ET5400LX
65K-Color TFT LCD
800 x 600 (8.4")

ET 5000LX family products are the industry's first Linux-based HMIs: bringing together rugged hardware and software for complex applications. They combine the features of a traditional easy-to-use HMI with powerful BASIC scripts. The ET 5000LX family is ideally suited for applications that require operator prompting, process monitoring, data acquisition, and connection to other controls and process equipment. Configure the ET 5000LX family with WinBuild 5000. Perform control with the ET 5000LX's built-in multi-tasking system and ESA's Ethernet and PC104 I/O. Communicate with PLCs, motion controllers, bar code readers, and other serial devices easily using communication drivers and script pseudocodes built into Winbuild 5000. Share data and connect to other devices with powerful built-in TCP/IP networking.



Example:

Codes and descriptions of Linux terminals

ET5200LX00000	6.4" TFT Color Display, 32MB Flash, Standard Housing, NEMA 4 bezel
ET5400LX21100	8.4" TFT Color Display, 128MB Flash, Deep Housing, NEMA 4X Stainless Steel