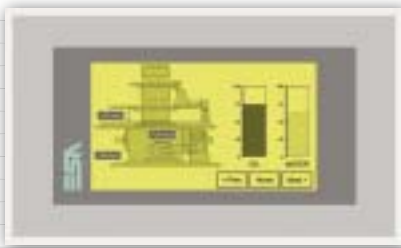


	VT155W	VT505W	VT525W
Display			
Type	Graphic LCD 4 tones of grey STN	Graphic LCD 4 tones of blue STN	Graphic LCD 16 colors STN
Touch Screen Matrix (cell dimension in pixels h-v)	20x8 (12x16)	20x16 (16x15)	
Backlighting	LED	CCFL	
Min. lamp life at 77°F (h)	-	45,000	25,000
Resolution pixels h-v (inches)	240x128 (4")	320x240 (5.7")	
Columns by Rows ¹ [text]	40x16/20x8/10x4		
Display area size (inches h-v)	3.72x2.15	4.54x3.40	
Text character Matrix (pixels h-v)	6x8/12x16/24x32	8x15/16x30/32x60	8x15/16x30/32x60
Character dimensions (inches h-v)	0.09x0.20	0.11x0.20	
Contrast adjustment	Software		
Character set	Programmable fonts/TTF Windows®		
User memory			
Project (text+graphic) (bytes)	640K		960K
Recipes/Alarm buffer (bytes)	16K/8K FLASH	16K/- FLASH	32K/8K FLASH
Memory card for backup/Expansion (bytes)	-		
Interfaces			
MSP serial port	RS232/422/485/TTY 20 mA		
ASP serial port	RS232 (8 pin)	-	RS232 (8 pin)
LPT parallel port	-		
Networks			
Integrated (option)	CAN, Profibus-DP	CAN, Profibus-DP, Ethernet	Ethernet
Optional ²	Profibus-DP, Interbus-S, CAN		
ESA-Net	Client		
Dimensions			
External (W x H x D) (inches)	6.54x3.94x1.56	8.27x6.23x2.13	
Cut-out (W x H) (inches)	6.19x3.59	7.80x5.83	
Technical data			
Power supply/Power consumed (24 Vdc)	18...32 Vdc/10 W		
Protection level	IP 65 front		
Operating temperature (°F)	+32...+122		
Storage/transport temperature (°F)	-4...+140		
Humidity (non-condensing)	<85%		
Weight (lbs)	1.1	3.1	
Certificates of approval	CE, cULus	CE, cULus	
Main features			
Project Languages	4		6
Password levels/Bit passwords	10/8		
Pages/Fields per page	64/32	128/34	150/48
Format of variables	DEC, HEX, BIN, BCD, ASCII, Floating point		
Dynamic texts/Lists of images	Value depends on dimensions of project memory		
ISA alarms/Info-messages	256/256	-/256	256/256
Help messages (pages/info messages/alarms)	64/256/256	128/256/-	150/256/256
Alarm history buffer	220	-	220
Recipes (Number/Variables per recipe)	128/256		
Trends (Memory/Number of samples)	-		
Pipelines (Number/Total bytes)	-		
Macros (Number/Commands per macro)	1024/16		
Print pages (Total/Number of fields per page)	64/128	-	64/128
Automatic operations	32		
Timers (Time base 100 ms)	32		
Equations	32		
Max bargraphs per page (taken together with fields)	32	34	48
Indicators,potentiometers,selectors per page	-		
Project images	BMP, JPEG, TIFF, PSD, WMF, PNG, EPS, ETC...		
Buttons per page	Number of buttons corresponding to the number of Touch-Screen cells		
Hardware Clock	Supercapacitor 72 hours	-	Supercapacitor 72 hours

① - Columns by rows of VT155W vertical 30x21/15x10/7x5

② - Obtainable using VTPROFI/DP, VTINTERBUS and VTCAN

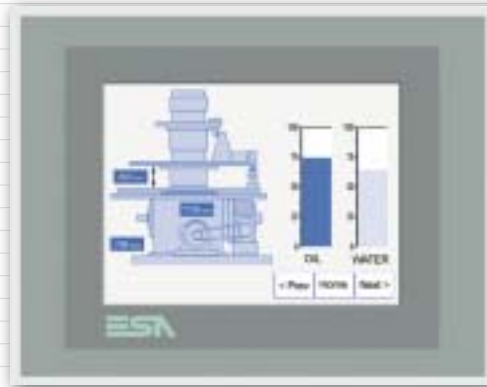
Touch Screen Terminals



VT155W
4 Tones of gray STN LCD
240 x 128 (4")



VT525W
16-Color STN LCD
320 x 240 (5.7")



VT505W
4 Tones of blue STN LCD
320 x 240 (5.7")

ESA Touch Screen Terminals bring ease-of-use and flexibility to the user. The touchscreen is as rugged as the keys on the keypad models. The Touch Screen Terminals on these pages represent a high value solution for many applications. For example, the VT155W can be mounted either horizontally or vertically, hence increasing the versatility of this model.

Main characteristics (model dependant):

- Alarms, passwords, recipes
- Use of Windows® fonts
- Importation of graphic images in any format
- Moving graphic objects
- Serial printing
- Integrated Profibus-DP and CAN
- Integrated Ethernet 10/100

Touch Terminals codes and descriptions

VT155W 00000 ¹	Interfaces: MSP, ASP8 - Project: 640 KB - Recipes: 16 KB
VT155W 000CN ¹	Interfaces: ASP8, CAN network - Project: 640 KB - Recipes: 16 KB
VT155W 000DP	Interfaces: ASP8, Profibus-DP network - Project: 640 KB - Recipes: 16 KB
VT505W 00000 ¹	Interfaces: MSP - Project: 640 KB - Recipes: 16 KB
VT505W 000CN ¹	Interfaces: MSP, CAN network - Project: 640 KB - Recipes: 16 KB
VT505W 000DP ¹	Interfaces: MSP, Profibus-DP network - Project: 640 KB - Recipes: 16 KB
VT505W 000ET	Interfaces: MSP, Ethernet network - Project: 640 KB - Recipes: 16 KB
VT525W 00000	Interfaces: MSP, ASP8 - Project: 960 KB - Recipes: 32 KB
VT525W 000ET	Interfaces: ASP8, Ethernet network - Project: 960 KB - Recipes: 32 KB

¹ - Models without ESA Logo are available

Accessories codes and descriptions

PROTFILM4	Transparent adhesive protective foils for 4" Touch Screen (5 pieces)
PROTFILM6	Transparent adhesive protective foils for 6" Touch Screen (5 pieces)